




Effective use of evidence-based programs in education

NCTI Conference 2007

**Dean L. Fixsen, Karen A. Blase,
Sandra F. Naoom, Melissa Van Dyke,
Frances Wallace**

National Implementation Research Network
Louis de la Parte Florida Mental Health Institute







Fr. Guido Sarducci

- ▶ The one minute university
- ▶ Economics 101

Saturday Night Live




Copyright © Dean L. Fixsen and Karen A. Blase, 2007




Science to Service

- ▶ Science to Service Gap
 - ▶ What is known is not what is adopted to help children, families, and adults
- ▶ Implementation Gap
 - ▶ What is adopted is not used with fidelity and good outcomes for consumers.
 - ▶ What is used with fidelity is not sustained for a useful period of time.
 - ▶ What is used with fidelity is not used on a scale sufficient to impact social problems.




Copyright © Dean L. Fixsen and Karen A. Blase, 2007




Education

- 53 million kids
- 6 million teachers and staff
- 140,000 schools
- 3,143 counties
- 60 states & U.S. jurisdictions




Copyright © Dean L. Fixsen and Karen A. Blase, 2007




Implementation Reviews

- Implementation evaluation literature
 - Trans-disciplinary
- Successful implementation practices
 - Trans-disciplinary




Copyright © Dean L. Fixsen and Karen A. Blase, 2007




Ineffective Methods

Excellent experimental evidence for what does not work

- ▶ Diffusion/dissemination of information by itself does not lead to successful implementation
- ▶ Training alone, no matter how well done, does not lead to successful implementation



Copyright © Dean L. Fixsen and Karen A. Blase, 2007




Ineffective Methods

Excellent evidence for what does not work

- ▶ Implementation by edict by itself does not work
- ▶ Implementation by “following the money” by itself does not work
- ▶ Implementation without changing supporting roles and functions does not work

Paul Nutt (2002). *Why Decisions Fail*



Copyright © Dean L. Fixsen and Karen A. Blase, 2007

 **What Works**

Effective intervention practices

+


Effective implementation practices

=


Good outcomes for consumers

 UNIVERSITY OF SOUTH FLORIDA


Copyright © Dean L. Fixsen and Karen A. Blase, 2007

 **Implement Innovations**

| | | IMPLEMENTATION | |
|--------------|---------------|-------------------------|---------------|
| | | Effective | NOT Effective |
| INTERVENTION | Effective | Student Benefits | |
| | NOT Effective | | |


 UNIVERSITY OF SOUTH FLORIDA

Copyright © Dean L. Fixsen and Karen A. Blase, 2007




Implement Innovations


| | | IMPLEMENTATION | |
|--------------|---------------|----------------------|---------------|
| | | Effective | NOT Effective |
| INTERVENTION | Effective | High Fidelity | |
| | NOT Effective | | |




Copyright © Dean L. Fixsen and Karen A. Blase, 2007



What Works

 **Implementation takes time**



Copyright © Dean L. Fixsen and Karen A. Blase, 2007

nim **Stages of Implementation**

Implementation occurs in stages:

- Exploration
- Installation
- Initial Implementation
- Full Implementation
- Innovation
- Sustainability

2 – 4 Years

USF
UNIVERSITY OF
SOUTH FLORIDA

Fixsen, Naoom, Blase, Friedman, & Wallace, 2005

Copyright © Dean L. Fixsen and Karen A. Blase, 2007

nim **Stages of Implementation**

Implementation occurs in stages:

- Exploration
- Installation
- Initial Implementation
- Full Implementation
- Innovation
- Sustainability

Implementation Outcomes

0% Intervention Outcomes 100%

USF
UNIVERSITY OF
SOUTH FLORIDA

Fixsen, Naoom, Blase, Friedman, & Wallace, 2005

Copyright © Dean L. Fixsen and Karen A. Blase, 2007

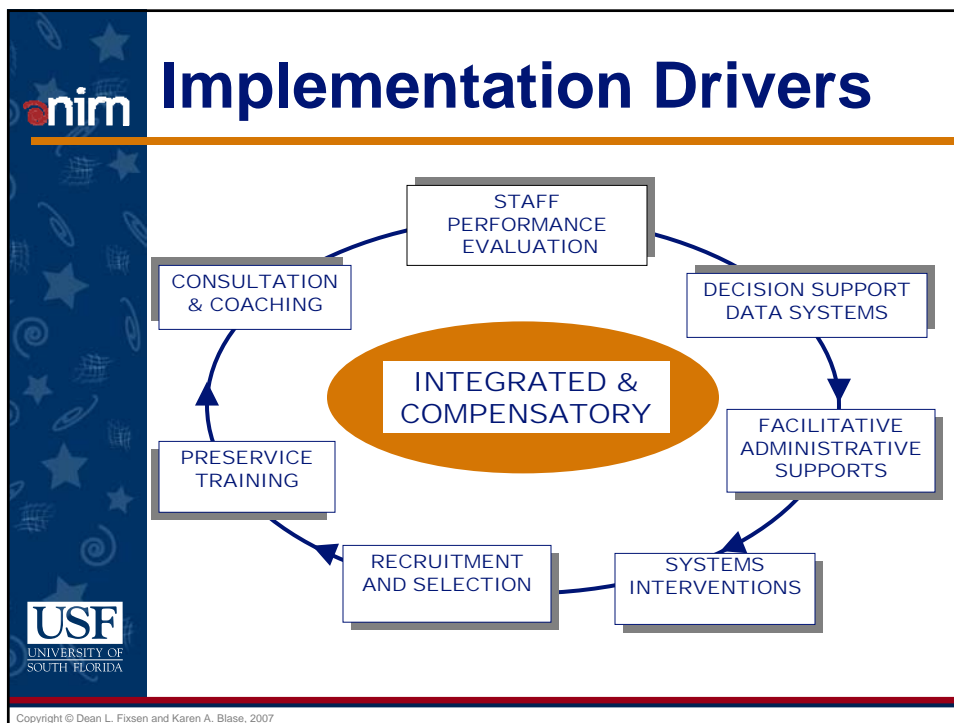
nim **What Works**

- High fidelity
- Consumer benefits
- Sustainability

require organizational change

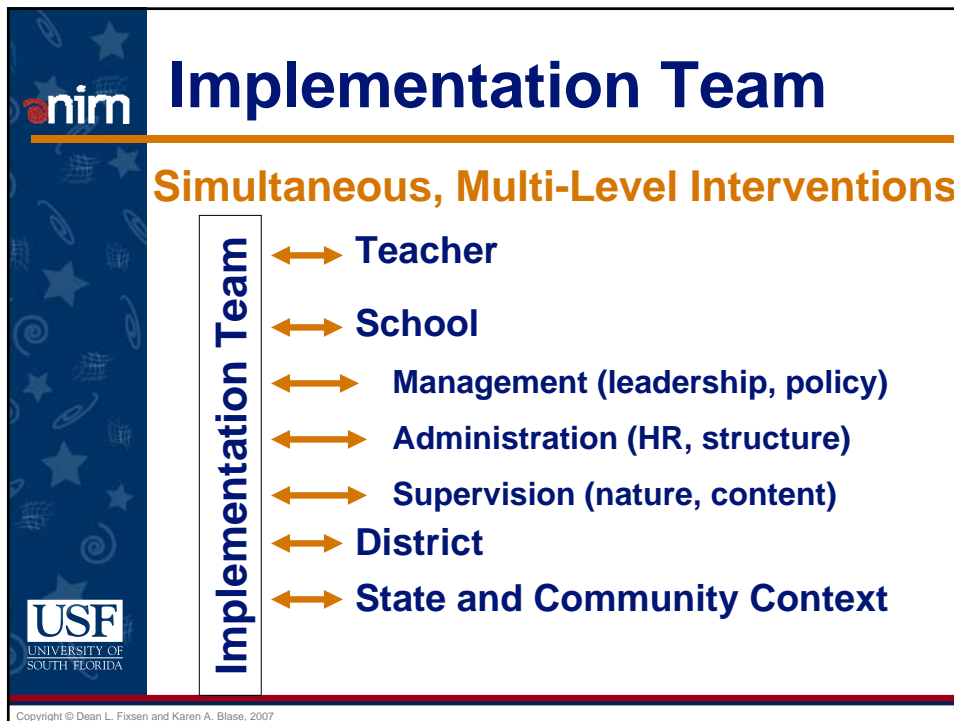
USF
UNIVERSITY OF
SOUTH FLORIDA

Copyright © Dean L. Fixsen and Karen A. Blase, 2007



| Integrated & Compensatory | | | |
|--------------------------------------|---|----------------------------|-----------------------------|
| | OUTCOMES (% of Participants who Demonstrate Knowledge, Demonstrate new Skills in a Training Setting, and Use new Skills in the Classroom) | | |
| TRAINING COMPONENTS | Knowledge | Skill Demonstration | Use in the Classroom |
| Theory and Discussion | 10% | 5% | 0% |
| ...+Demonstration in Training | 30% | 20% | 0% |
| ...+ Practice & Feedback in Training | 60% | 60% | 5% |
| ...+ Coaching in Classroom | 95% | 95% | 95% |

Joyce and Showers, 2002



nim

What Works

- **Sustainability**
- **Scale up**

require system transformation

USF
UNIVERSITY OF
SOUTH FLORIDA

Copyright © Dean L. Fixsen and Karen A. Blase, 2007

nim

Systems Change

Federal Departments → **State Department** → **Districts** → **Schools** → **Teachers/ Staff** → **Effective Practices**

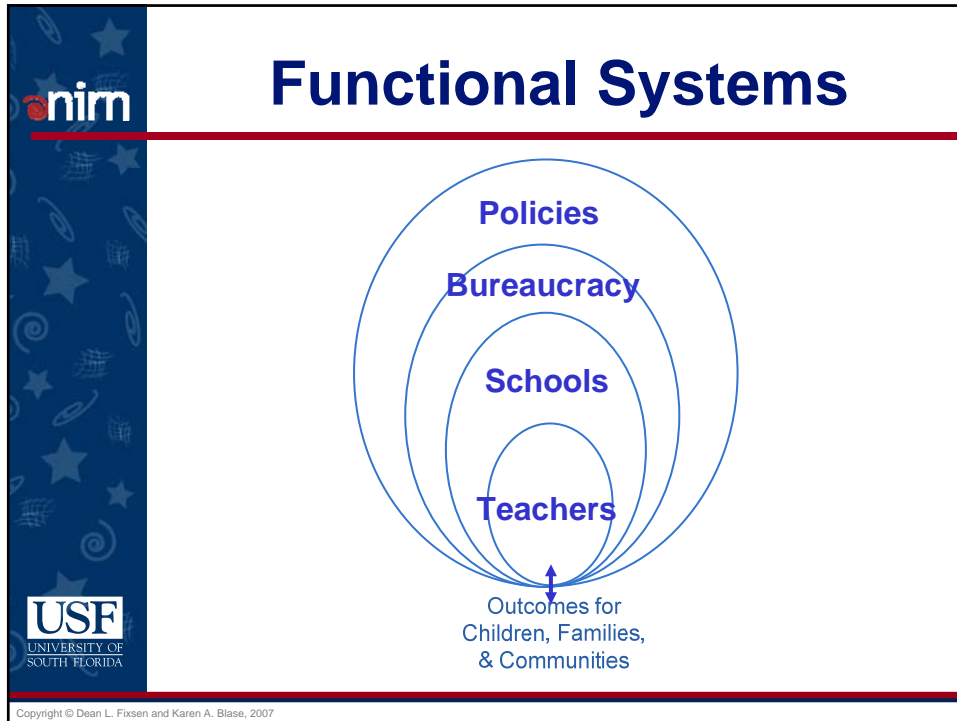
ALIGNMENT

Implementation Teams

FORM FOLLOWS FUNCTION

USF
UNIVERSITY OF
SOUTH FLORIDA

Copyright © Dean L. Fixsen and Karen A. Blase, 2007



nim

What Works

- **What does it take to effectively use evidence-based programs in education?**
- **A lot of work that requires time, organizational change, and systems transformation**

CONGRATULATIONS!

You passed Implementation 101

USF
UNIVERSITY OF
SOUTH FLORIDA

Copyright © Dean L. Fixsen and Karen A. Blase, 2007



Thank You

We thank the following for their support

- ▶ Annie E. Casey Foundation (EBPs and cultural competence)
- ▶ William T. Grant Foundation (implementation literature review)
- ▶ Substance Abuse and Mental Health Services administration (implementation strategies grants; NREPP reviews; SOC analyses of implementation; national implementation awards)
- ▶ Centers for Disease Control & Prevention (implementation research contract)
- ▶ National Institute of Mental Health (research and training grants)
- ▶ Office of Special Education (Capacity Development Center)
- ▶ Agency for Children & Families (Child Welfare Leadership)
- ▶ Juvenile Justice and Delinquency Prevention (program development and evaluation grants)



Copyright © Dean L. Fixsen and Karen A. Blase, 2007




For More Information

| | |
|--|--|
| Karen A. Blase | Dean L. Fixsen |
| ▶ 813-974-4463 | ▶ 813-974-4446 |
| ▶ kblase@fmhi.usf.edu | ▶ dfixsen@fmhi.usf.edu |

National Implementation Research Network
At the Louis de la Parte Florida Mental Health Institute
University of South Florida
<http://nirn.fmhi.usf.edu>



Copyright © Dean L. Fixsen and Karen A. Blase, 2007




For More Information

Fixsen, D. L., Naoom, S. F., Blase, K. A., Friedman, R. M. & Wallace, F. (2005). *Implementation Research: A Synthesis of the Literature*. Tampa, FL: University of South Florida, Louis de la Parte Florida Mental Health Institute, The National Implementation Research Network (FMHI Publication #231).

Download all or part of the monograph at:

<http://nirn.fmhi.usf.edu/resources/publications/Monograph/index.cfm>



Copyright © Dean L. Fixsen and Karen A. Blase, 2007